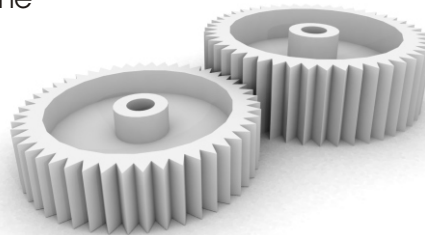


# CAPDET Works

## Rapid Design and Costing Solution for Wastewater Treatment Plants

CapdetWorks is the industry's only software tool for fast and accurate preliminary design and cost estimation of wastewater treatment plant construction projects. Eliminate cumbersome and time-consuming spreadsheet-based design algorithms. Simply drag-and-drop unit processes to build a plant schematic with CapdetWorks and it will design the plant and estimate the costs to build, operate and maintain the facility.

By quickly and easily building multiple treatment alternatives to compare relative costs, your planning-level design and costing productivity improves dramatically, leading to better engineering decisions. CapdetWorks utilizes industry-accepted design algorithms to derive the required unit process designs. Sophisticated unit cost estimation techniques are used to size and cost all treatment processes.



### Advanced Features

- Over 60 treatment processes covering the entire wastewater treatment plant, including biological nutrient removal.
- Unit costs are carefully researched based on discussions with manufacturers, suppliers, and consultants
- Required unit process dimensions and equipment are calculated automatically.
- Localized costing features allow you to create your own cost index or apply published indices.
- Cost existing plant designs for retrofit or insurance replacement values.
- Supports multiple units of measurement.
- Detailed printed and exportable reports.
- Each parameter offers a "notes field", right in the layout, to record and review decision making information.



Expert Water & Wastewater Treatment Modeling Software & Services

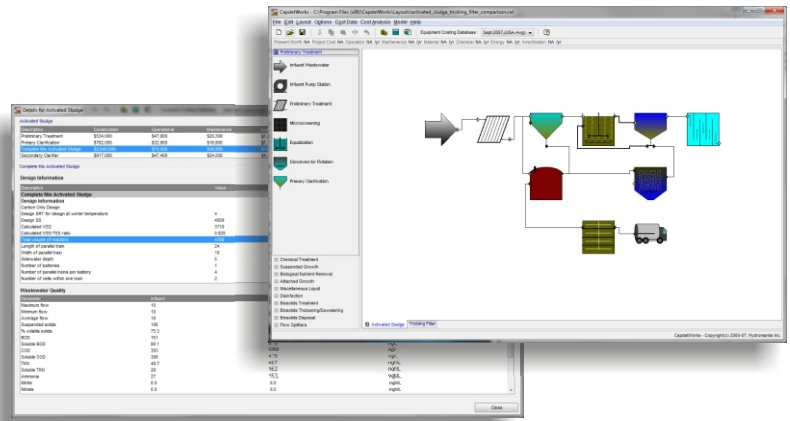


### System Requirements

- Windows XP, Vista, or 7
- 512 MB of RAM or more
- 250 MB of free disk space

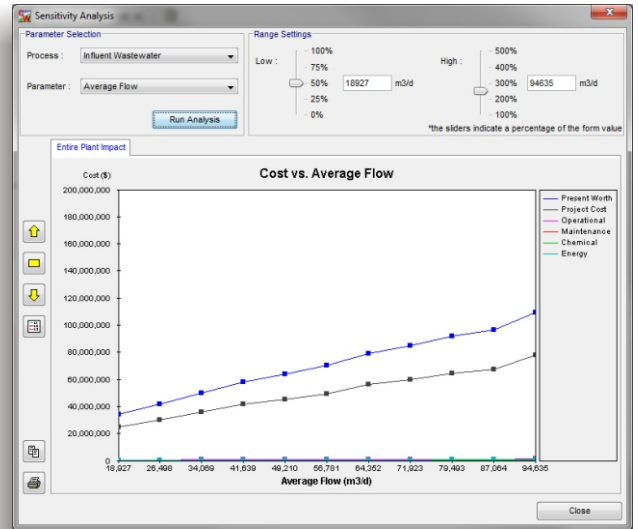
[www.hydromantis.com](http://www.hydromantis.com)

The activated sludge design algorithms in CapdetWorks are based on the concepts of solids retention time and influent fractionation.



The screenshot shows the 'Equipment Costs' database window. It contains a table with columns for 'Equipment', 'Quantity', 'Unit Cost', and 'Total Cost'. The table lists various pieces of equipment such as '1 ft of perforated PVC pipe', '1 ft of 6-in. diam. perforated polyvinyl chloride pipe', and '1 ft of 12-in. diam. reinforced concrete drainage for leach treatment'. The 'Quantity' and 'Unit Cost' columns are highlighted in blue.

Interactive sensitivity analysis helps you focus and work on parameters that most affect the treatment cost.



CapdetWorks uses a unit costing approach which features an extensive costing database. The effects of inflation are included, using cost indices. Our unit costs are carefully researched based on discussions with manufacturers, suppliers, and consultants.

CapdetWorks has an updated reporting feature that allows users to export costing data, layout schematics, and process data into three different file formats, depending on the user's preference. The report can be created as a Microsoft Excel spreadsheet, a Rich Text Format document (which can be opened in most word processing programs including Microsoft Word) or simply as plain text.



Our other products:



Hydromantis offers expert consulting for treatment plant modelling, design and optimization and is the developer and owner of the industry's most popular modelling and simulation software including: GPS-X, Toxchem, CapdetWorks and WatPro.

[www.hydromantis.com](http://www.hydromantis.com)